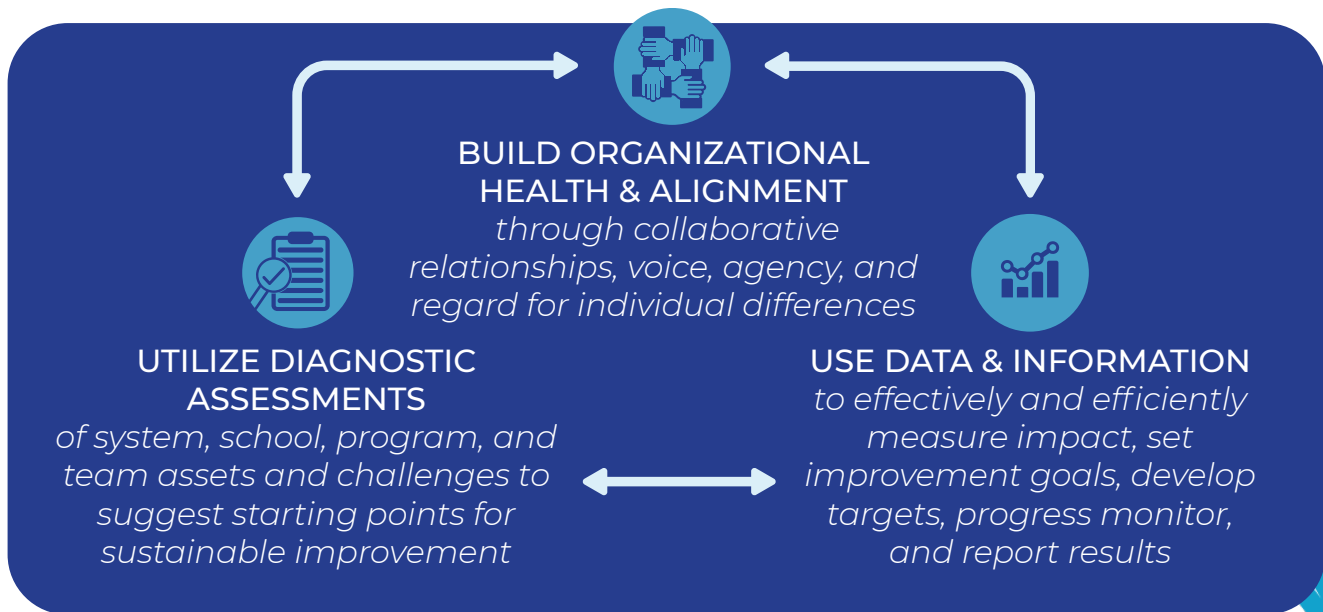


Catalyst for Educational Change (CEC) is an approved vendor of Hawai'i Department of Education to partner with Hawai'i schools and complex offices.

All underlying components of support for schools are rooted in the unique values and culture of Hawai'i with an emphasis on **place-based learning** and a **sense of belonging**.

Our **Hawai'i-based consultants** thoughtfully weave planning and preparations for an **inclusive and collective implementation and shared leadership**.

THE CEC PROCESS



ABOUT CEC

Our work is change management. Our mission is to be the catalyst for collective solutions and innovation in more educational environments.

PROBLEM OF PRACTICE

Designed for a school team, the **Problem of Practice Packages build collective capacity for continuous improvement through a comprehensive and holistic process.** This is accomplished through a 6–12-month timeline of development and support with 100 customized hours, meeting the unique needs of each school.

Problem of Practice Packages include **College, Career, and Life Readiness; School Climate; Whole Child; Mathematics;** and **Literacy.** The lasting change is context-specific, has meaning and ownership by all stakeholders in the system, and leads to continuous improvement.

FIVE CORE COMPONENTS

of Problem of Practice Packages

- 1 Framework for Integrating Place-Based Learning and a Sense of Belonging
- 2 Comprehensive Needs Assessment
- 3 Leadership Coaching & Setting Direction
- 4 Inquiry Based Professional Learning
- 5 Implementation Support and Monitoring

EMPOWERED LEADERSHIP

The **Empowered Leadership Package** is designed for a school team to **invest in practices that build collective capacity for continuous improvement through a comprehensive and holistic shared leadership process that is tied to the discipline of improvement science.** Our approach accomplishes this by empowering leaders to effectively collaborate, analyze multiple sources of data, and make data-informed decisions to positively impact school culture and student academic and behavioral outcomes.

With 20 days of customized support, this Package is also designed to be completed within one year for each school with training, coaching, and tools that increase the leadership team's knowledge, skills, and practices. This is done through virtual and onsite sessions with each school, individual and team coaching, professional learning, data reviews, retreats, and academic plan development.

FIVE CORE COMPONENTS

of Empowered Leadership Packages

- 1 Comprehensive Needs Assessment
- 2 Leadership Coaching
- 3 Follow-up Coaching Sessions
- 4 Culminating Data Retreat
- 5 School Academic Plan

We are committed to supporting Hawai'i district schools and offices so we can together achieve student success, staff success, and successful systems of support.

Learn more about how CEC can support your school at cecweb.org/Hawaii or contact your local Hawai'i consultant.

CATALYST FOR EDUCATIONAL CHANGE

