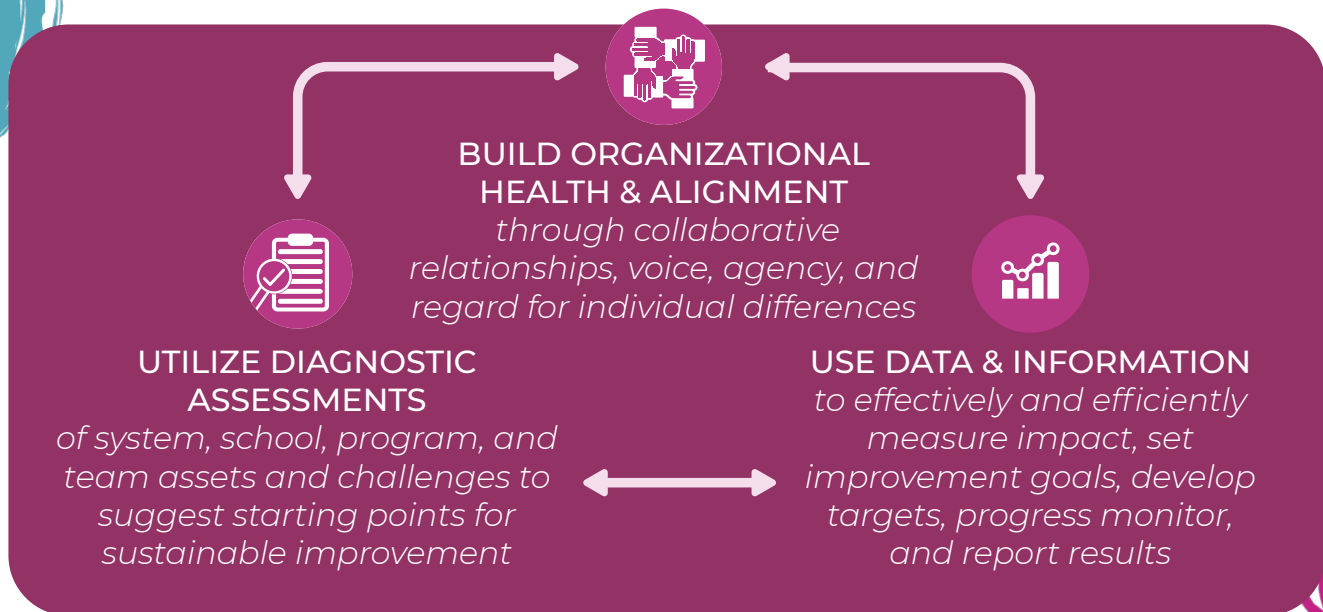


Catalyst for Educational Change (CEC) is an approved vendor of Hawai'i Department of Education to partner with Hawai'i schools and complex offices.

All underlying components of support for complex areas and schools are rooted in the unique values culture of Hawai'i with an emphasis on **place-based learning** and a **sense of belonging**.

Our **Hawai'i-based consultants** thoughtfully weave planning and preparations for an **inclusive and collective implementation and shared leadership**.

THE CEC PROCESS



ABOUT CEC

Our work is change management. Our mission is to be the catalyst for collective solutions and innovation in more educational environments.

INSTRUCTIONAL LEADERSHIP LEARNING LABS (iL³)

The **Instructional Leadership Learning Labs (iL³)** are designed to network multiple complex area leaders and is tied to the discipline of **improvement science in a collaborative community**. With 16 days of customized support across the 12 months, the iL³ approach accomplishes this by empowering these leaders to effectively collaborate, learn from one another, and build their toolbox in an effort to support their school sites.

COMMON TEACHING & LEARNING THEMES

Addressed by iL³

- Common Core/NGSS Content Area Knowledge and Instruction
- Standards-Based Teaching and Learning
- Implementation of Best Practices in Instruction
- Application of Formative Assessment Strategies in the Classroom to Improve Instruction and Student Learning

LEARNING COLLABORATIVES

Learning Collaboratives are designed to network multiple schools in **cycles of improvement related to common themes and tied to the discipline of improvement science**. The Learning Collaboratives will also focus on a common problem of practice but will approach the improvement through a **12-month network structure**. Participants from various district schools and offices will work collaboratively on a shared area of improvement to accelerate change at the site-level. This is accomplished through onsite and virtual sessions, coaching, consultation, and check-ins.

This benefits networks by providing schools with implementation tools and guidance designed for **sustainability and capacity building**; offering opportunities to **learn from other schools on the same journey**; providing access to **research-based improvement strategies** based on the HIDOE's same Plan, Do, Check, Act cycle; and allowing for **shared costs and resources**. The five Learning Collaboratives offered to Hawai'i schools are:

1. **Literacy**
2. **Mathematics**
3. **Schoolwide SEL**
4. **School Climate**
5. **College, Career, and Life Readiness**

FOUR PRINCIPLES

of each Learning Collaborative

- Focus on a common improvement goal based on data.
- Understand the root causes and contributing factors of the problem, and develop an improvement strategy based on effective practices.
- Implement and refine improvement strategy.
- Assess impact and key learnings and identify next steps.

We are committed to supporting Hawai'i district schools and offices so we can together achieve student success, staff success, and successful systems of support.

Learn more about how CEC can support your complex area office or network at cecweb.org/Hawaii or contact your local Hawai'i consultant.

CATALYST FOR EDUCATIONAL CHANGE

